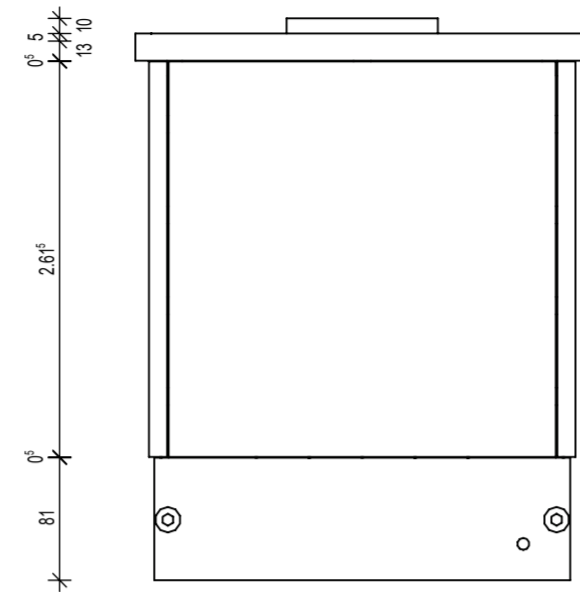
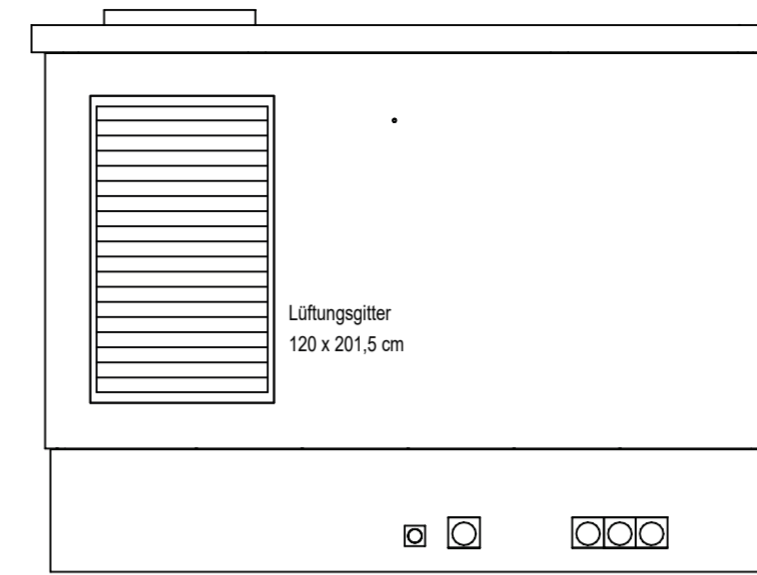


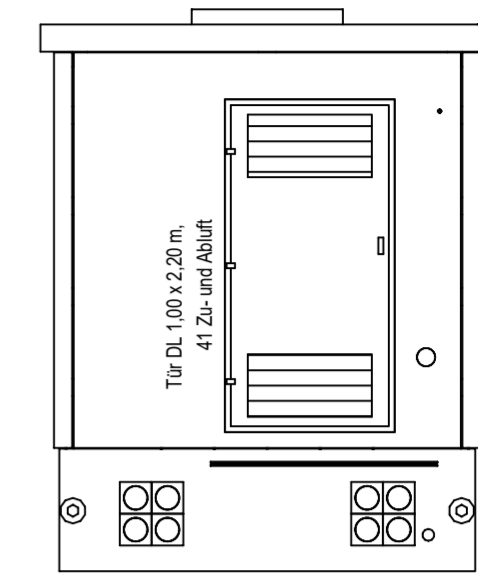
Ansicht von vorne



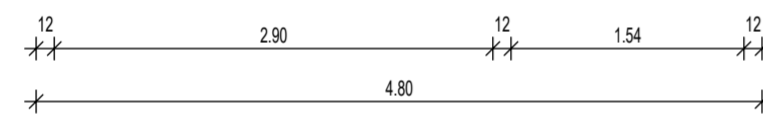
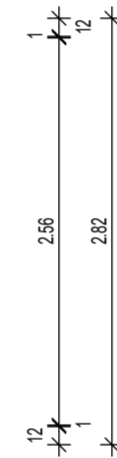
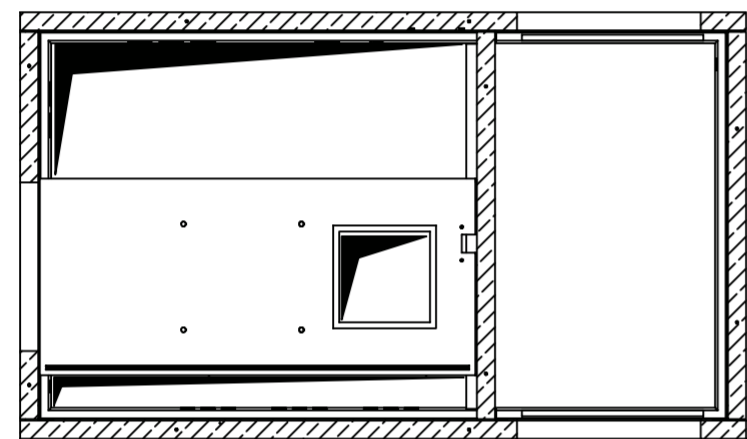
Ansicht von rechts




Ansicht von hinten



Ansicht von links



Grundriss

| Kundenzeichnung   |       |        |   |                    |                         |   |
|---|-------|--------|---|--------------------|-------------------------|---|
| Index   | Datum | Kürzel | Änderungsvermerk                        |                    |                         |   |
|   |       |        |   | TS-R1-498_Typ_G001 |                         |   |
|   |       |        |   |                    |                         |   |
|   |       |        |   |                    |                         |   |
|   |       |        |   |                    |                         |   |
|  BETON- UND ENERGIETECHNIK<br>HEINRICH GRÄPER GMBH & CO. KG<br>Ida-Gräper-Weg 26197 Ahlhorn<br>WEB www.graep.de E-MAIL info@graep.de |       |        | Datum<br>Technik<br>Standardisierung    |                    | Technik<br>Konstruktion | Planersteller: JSC<br>Datum: 13.10.2022 |
|   |       |        | Freigabe zur Produktion<br>Unterschrift |                    |                         |   |